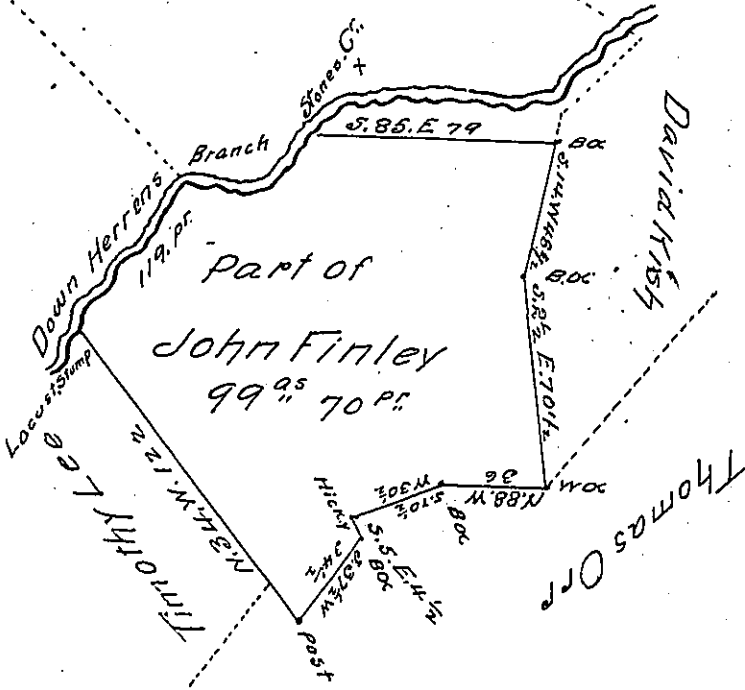


John Herren Esq. formerly
part of the same tract



Courses on the Branch
Beg. at Locust Stump

- N. 23. E. 17
- N. 45. E. 24 1/2
- N. 34. E. 22
- S. 82. E. 33 1/2
- N. 37. E. 22
- 119 P.

A Draught of a Tract of Land Situate in Southampton Township
Franklin County Containing Ninety nine acres and seventy
perches and the usual allowance of six pr. Cent for roads &c.
being part of a larger tract of Four hundred and twelve
acres and one hundred and forty four perches & allowance
&c. Surveyed in pursuance of a Warrant granted John Finley
Dated Dec. 15th 1752. Resurveyed and laid off from the other
part of the tract for George Lee. March 10th 1812

Thomas Poe D.S.

To Andrew Porter Esq.
Surveyor General of Penna.

IN TESTIMONY that the above is a copy of the original remaining on file in
the Department of Internal Affairs of Pennsylvania, made
conformably to an Act of Assembly approved the 16th day of
February, 1833, I have hereunto set my Hand and caused
the Seal of said Department to be affixed at Harrisburg,
this twenty third day of September 1904

Loe P. Pearson
Secretary of Internal Affairs.